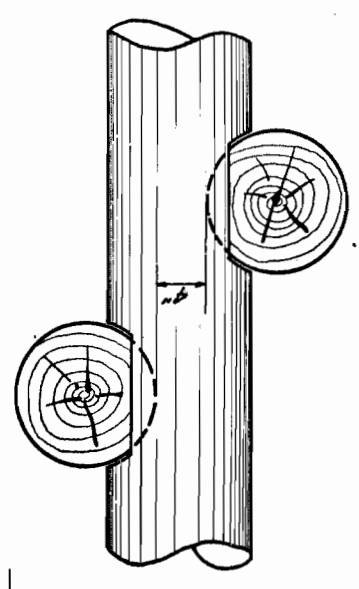
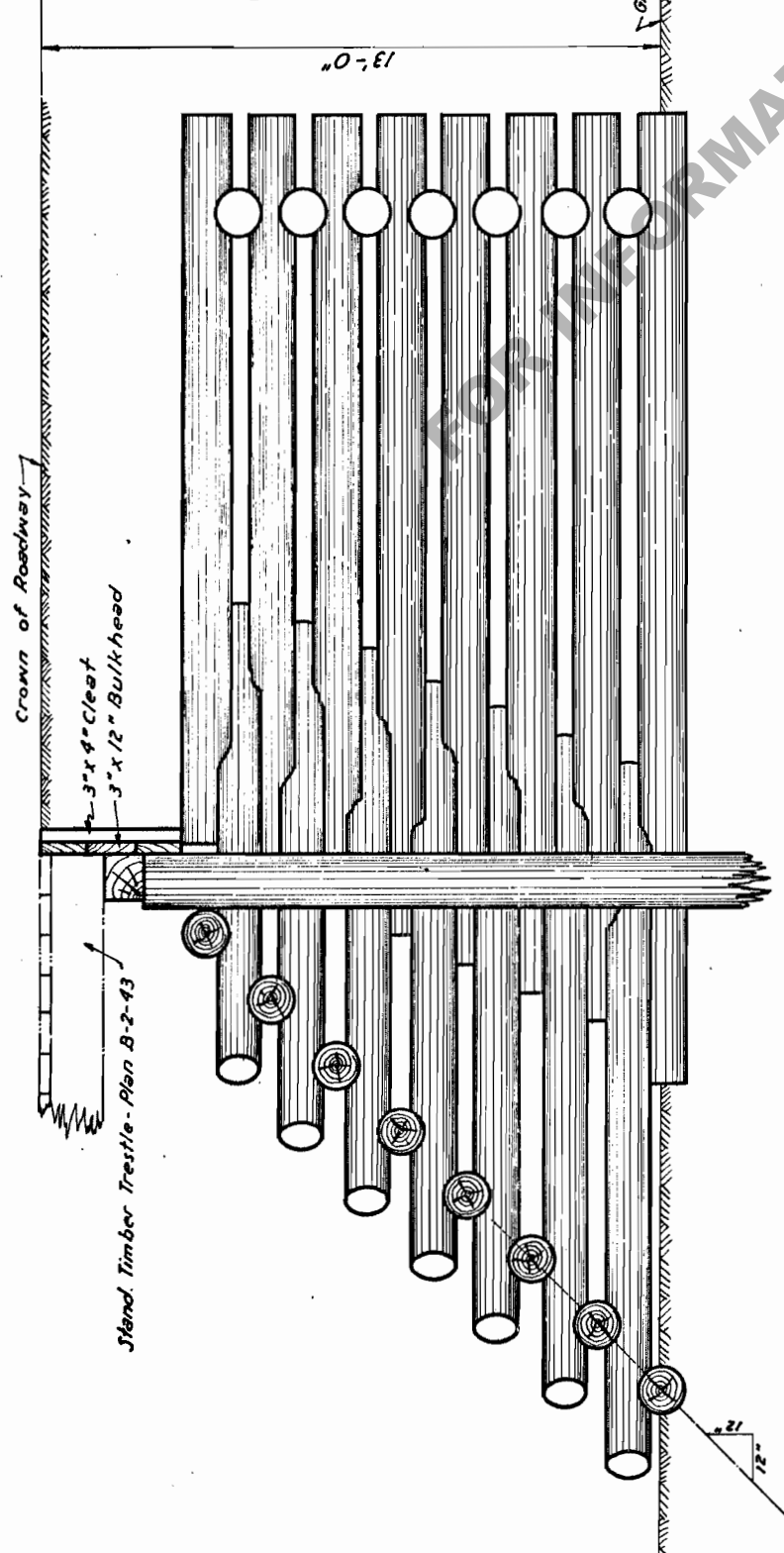
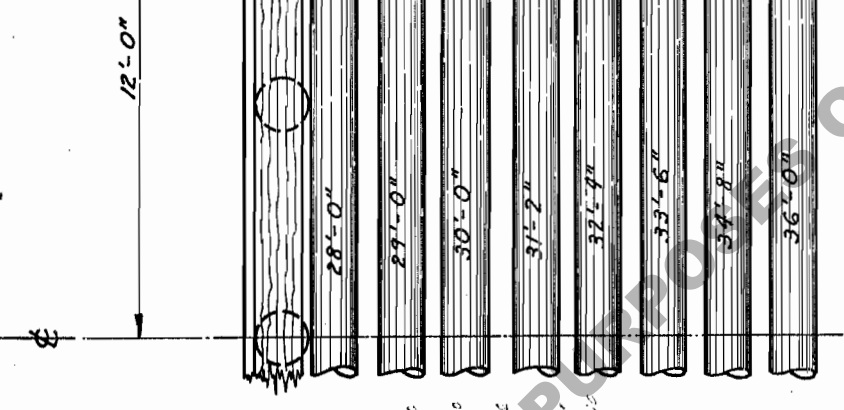


HALF PLAN

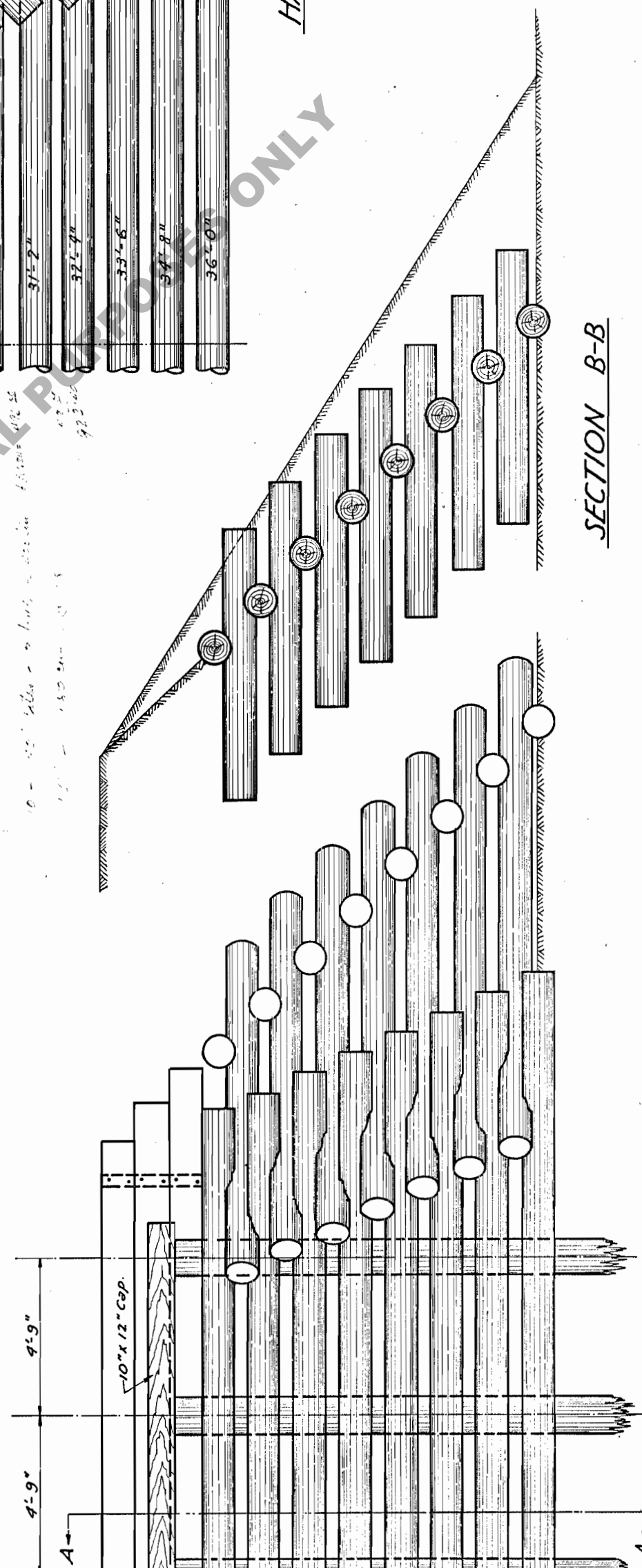
STANDARD
 CRIB ABUTMENT
 LOUISIANA HIGHWAY COMMISSION
 BATON ROUGE, LA.
 Scale $\frac{1}{2}'' = 1'-0''$ Except as Noted. Date Oct. 30, 1923.
 Approved _____ State Highway Engineer



TYPICAL DETAIL OF JOINTS
 Scale $\frac{1}{2}'' = 1'-0''$



SECTION A-A



FRONT ELEVATION

SECTION B-B